

# Premier Suite

MARINE VIEWS

RESIDENTIAL AGED CARE

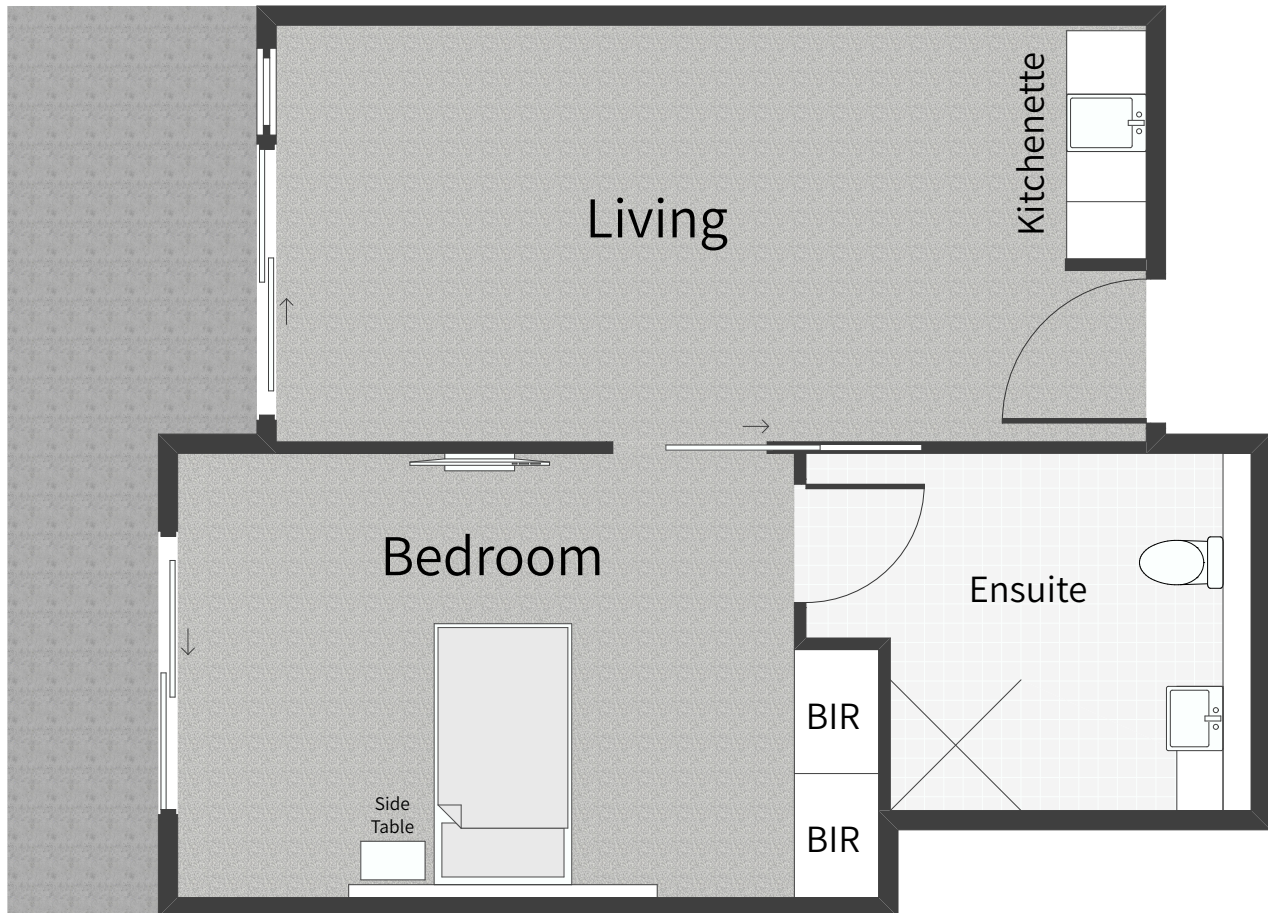
*C. Heslop*

Approximate Areas

Living/Lounge Area 20-23m<sup>2</sup>

Bedroom/Ensuite 27-28m<sup>2</sup>

Balcony/Terrace 14-17m<sup>2</sup>



Premier suites are very large spaces designed for those looking for superior amenity. The suites feature a private kitchenette, dining and lounge, a generously proportioned bedroom (with 2.9m ceilings), private ensuite and large balcony with stunning vistas. Rooms vary in size from 47–51m<sup>2</sup> (inc of bedroom and living areas).

You will have full control of the temperature with individually controlled air-conditioning, operable windows, and of course double glazing for all windows and glass doors to the balcony.

Each suite is thoughtfully furnished with an electronic king-single bed, in-ceiling hoist, in-built cabinetry including a wardrobe, desk and fridge recess, and designer furniture including a luxury armchair, visitor chair and overbed table.

Ensuites feature floor-to-ceiling large format tiles and designer cabinetry including a European basin and are heated for your comfort.

Your suite includes a 50" smart TV, Wifi internet connection, in-room phone, device charging points, advanced falls detection and monitoring system, electronic door security, and a nurse call system.