

Signature Suite

Approximate Areas

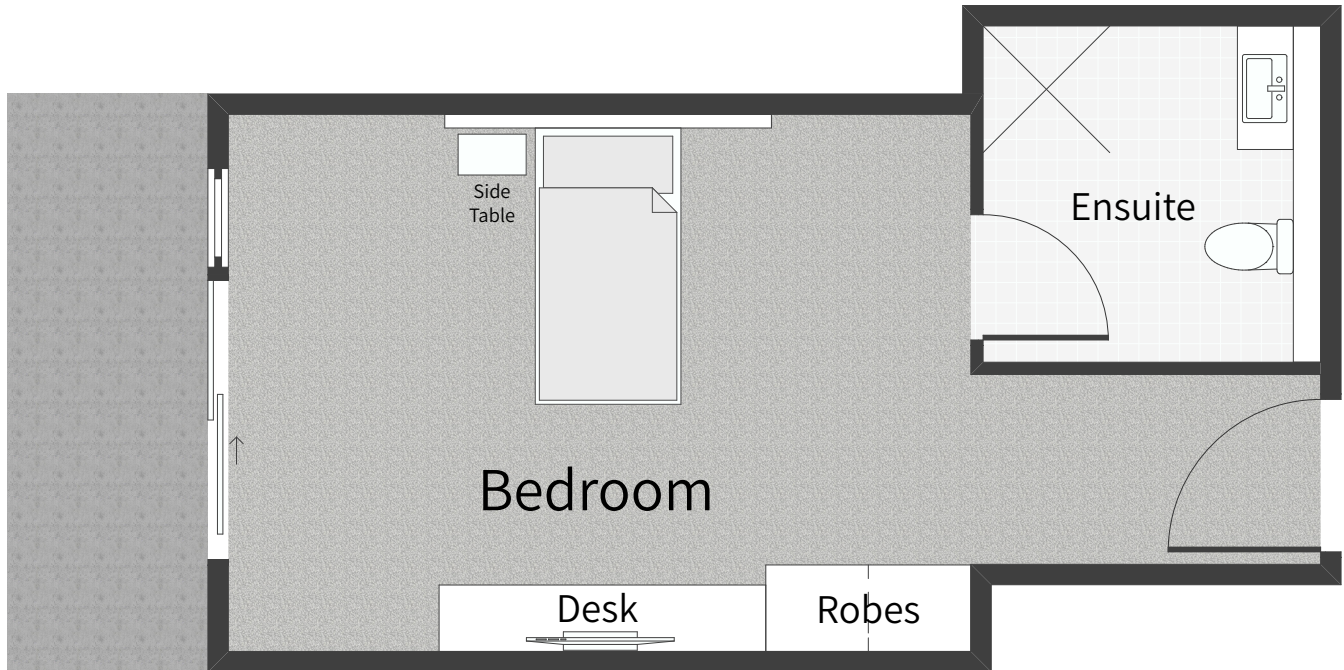
Living Area 31-33m²

Balcony/Terrace 6-8m²

MARINE VIEWS

RESIDENTIAL AGED CARE

C. Heslop



The Signature suite is a generous space designed, ranging between 31–33m². Each suite has a private ensuite, high ceilings(2.9m) and extra space for the inclusion of a lounge, small dining setting or other furniture from your home.

Interiors are relaxed, light and neutral, enabling you to personalise your space to suit your taste. Suite interiors feature bespoke carpet, floor-to-ceiling sheers and drapes, feature panelling, designer wallpaper and a luxury bedhead.

You will be able to control the temperature of your suite with individually controlled air-conditioning and operable windows. Windows are double glazed so you can enjoy the views without the heat or cold bothering you. The ensuite is heated for your comfort.

Your in-room furniture includes an electronic king-single bed, in-ceiling hoist, in-built cabinetry including a wardrobe, desk and fridge recess, and designer furniture including a luxury armchair, visitor chair and overbed table.

Room technology features include a 50" smart TV for you to enjoy your favourite programmes. Wifi internet connection, in-room phone will keep you connected. Device charging points, advanced falls detection and monitoring system, electronic door security, and a nurse call system are also part of our standard offering.